




MICHAEL  PHELPS
LEGEND[®]

LEGENDARY PERFORMANCE

RELAX. IT'S
 **Master
Spas[®]**

MICHAEL  PHELPS
LEGEND

 BY MASTER SPAS

Because you don't believe in second best.



A TRUE LUXURY

The difference between the best and all the others comes down to performance. And just like its namesake, great performance is exactly what you'll experience with the Michael Phelps Legend Series hot tub by Master Spas. A long list of exceptional features make these ultra premium spas look and feel luxurious. But engineering and technology are what really sets this Legend apart from other spas. Every inch is designed and engineered for ultimate luxurious enjoyment.

Legendary Performance

THE PERFECT BLEND OF ART AND SCIENCE



Master Spas' flagship line of ultra premium hot tubs is a stunning work of technology. The color display control panel lets you easily manage every function of the hot tub, and by using the available app for your smart phone or tablet, you can make sure your spa is always ready, no matter where you are.*

Crystal clear water is the result of a synergistic combination of EcoPur® Charge Master Core Technology water filtration and the optional UV light/ozone system called Mast3rPur™. There are no water management systems on the market, including salt systems, that come close to this multi-faceted approach to water quality.

Michael Phelps Legend Series jets offer a tension-relieving massage that will leave you revived and restored after a stressful day. Many jets are fully adjustable from 10 to 100 percent velocity, allowing you to customize every seat in the spa.

Our optional premium Bluetooth stereo system floods your experience with amazing sound and even enables you to stream your favorite movies or shows via your tablet with waterproof accessories.

Michael Phelps Legend Series hot tubs by Master Spas are designed and engineered to outperform the competition.



EUROPEAN INSPIRED LINES



CUSTOM AIR CONTROLS & VALVES



AMAZING WATER FEATURES

*Requires optional Wi-Fi module

MASTERSPAS.COM



Master Spas Legendary Therapy

FINELY-CRAFTED, FORM-FITTING SEATS PERFECTLY CRADLE THE HUMAN BODY



We have taken therapy to the extreme simply by creating seats that wrap you in comfort and deliver the ultimate in hydrothermal therapy from head to toe. For example, the ergonomically designed lounge seat utilizes 22 strategically placed jets that maximize the coverage for your back, calves, and feet — all with individual controls.

EXPERIENCE MASTER SPAS LEGENDARY THERAPY

Master Spas offers numerous therapeutic jet configurations, all within your command. Choose a full body massage... or perhaps concentrated neck and shoulder relief... or a soothing foot massage... or a relaxing lounge and cool-down seat. Many jets are fully adjustable from 10 to 100 percent velocity, allowing you to customize every seat in the spa!

- StressRelief Neck and Shoulder Seat™
- Master Blaster® Foot Massage Therapy
- Xtreme Therapy™ Seat
- Master Force™ Bio-Magnetic Therapy System
- Exclusive Orbit Jets with stunning crystal-like nozzles



LSX 900, shown with a Sterling Silver shell and MasterTech™ Deluxe Driftwood skirting



Therapeutic Jets

ALL WITHIN YOUR COMMAND

Many jets are fully adjustable from 10 to 100 percent velocity, allowing you to customize every seat in your spa! Our exclusive Orbit Jets have stunning crystal-like nozzles, and can be illuminated from within with the optional Afterglow Jet Package.

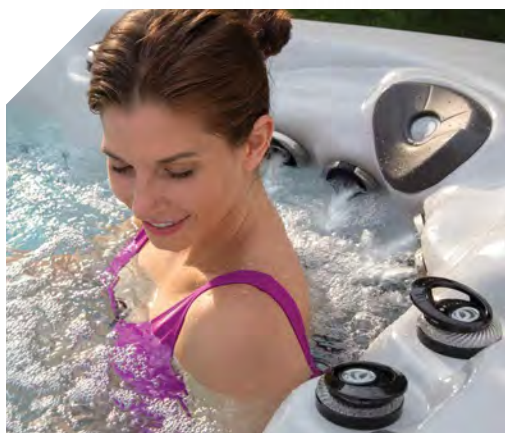
Putting you in control of your wellness

MASSAGE & PAIN RELIEF

MASTER FORCE™ BIO-MAGNETIC THERAPY SYSTEM

Used for centuries to help relieve pain, improve circulation, reduce swelling and alleviate stiffness, magnetic therapy is being reborn in the world of modern medicine. More doctors and physical therapists now use magnetic therapy for the treatment of back problems, arthritis and sports injuries. Many professional athletes use magnetic therapy for pain relief and performance enhancement.

That's why Master Spas, after extensive research and development, chose to combine the proven benefits of hydrotherapy with the pain relieving comfort of bio-magnetic therapy. Our patented Master Force™ Bio-Magnetic Therapy System applies strategically placed magnets to two pressure points behind the neck and eight throughout the shoulders, back and seat areas in our exclusive StressRelief Neck and Shoulder Seat™.



STRESSRELIEF NECK AND SHOULDER SEAT™

Our exclusive StressRelief Neck and Shoulder Seat features specially designed jets that apply tension-relieving massage where it's needed most, across the neck and shoulders.



MASTER BLASTER® FOOT MASSAGE THERAPY

Our Master Blaster Foot Massage Therapy System uses dual jet clusters with 28 total individual nozzles designed to rejuvenate your body through an encompassing foot massage. This unique form of reflexology is supported by scientific studies showing the health benefits of foot massage. Our Master Blaster Foot Massage Therapy System is powered by a separate, oversized pump, generating powerful yet soothing foot relief.



Therapy in a whole new light

AFTERGLOW JETS & DREAM LIGHTING

Enhance your relaxation experience with an enchanting cascade of color. Our standard LED light package illuminates your pillows, water features, controls and more with a rich spectrum of inviting colors. The optional Afterglow Jet Package brings a brilliant kaleidoscope of colors through the larger crystal-like jets in your spa. Dream Lighting adds beautiful soft streams of light to accent the exterior corners of your hot tub at night.*

Music, laughter, family and friends

THE PERFECT SETTING



Michael Phelps Legend Series hot tubs by Master Spas provide the perfect setting to bring family and friends together. Since everything about the Legend is delightfully stress-free, you'll have peace of mind when you're entertaining. With user-friendly, one-touch controls, you'll have access to a brilliant kaleidoscope of lighting, cascading waterfalls, a high quality sound system* and hydrotherapy that relaxes and restores.



HEAR THE RICH STEREO SOUND OF THE FUSION AIR SOUND SYSTEM*

Four interior water-resistant speakers and a subwoofer maximize the sound quality of your music. The Fusion Air Sound

System includes a water-resistant remote and connects quickly and easily through the Bluetooth of your phone or other device allowing you to stream your favorite station or playlist.



WATCH YOUR FAVORITE SHOWS OR MOVIES

With the optional Fusion Air Sound System, it's easy to stream shows or movies from the comfort of your hot tub

using your tablet in a waterproof case, and our heavy duty suction stand* to mount it on the edge. Simply connect through Bluetooth on your device and pick what you want to watch. It's that easy!



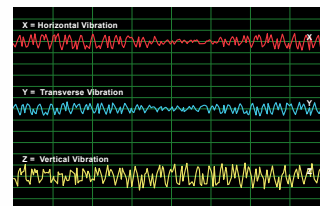
SMART DEVICE, MEET SMART SPA

Set the mood prior to entering your spa with the right lighting, water temperature and running massage pumps, all from the convenience of your Apple® or Android™

device. You can do this remotely with the optional integrated Wi-Fi Module that works with a Wi-Fi spa control app.

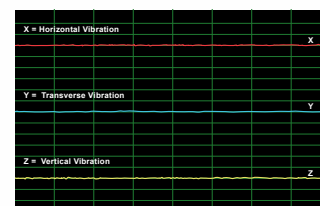
NOISE REDUCTION SYSTEM

The little things in life make such a big difference for us. It could be the smile of a young child at the end of a long day, or maybe it's the fact that you hit all the green lights on your morning commute. One thing that's been more difficult to find in these busy times is a quiet, relaxing place to rejuvenate yourself. The most relaxing spas in the world have been made even better with our exclusive Noise Reduction System (NRS).



The industry standard is 153% more vibration than Master Spas' NRS.

The NRS is the result of advanced engineering innovation that reduces pump and motor vibration significantly as compared to the industry standard mounting system, making it even easier to find your quiet place.



Master Spas' NRS significantly reduces pump and motor noise and vibration.

The heart of Master Spas' Noise Reduction System is the unique motor mount developed by Master Spas' world class engineers and our industry leading suppliers. The NRS is featured on Pump 1 on every Michael Phelps Legend Series hot tub.



Easy to own

EASY TO ENJOY

One of our goals is to dismiss the myths that owning and caring for a hot tub involves high costs of time, energy and resources. With Master Spas, it is simply not true. We invest significantly in product research and development of each spa component to ensure lasting performance with easy care. And we're not done yet. We continue to improve our spas, making them easier to maintain and easier to enjoy — after all, we believe that's part of the therapy, too.

BETTER INSULATION MEANS LOW ENERGY COSTS

Every Master Spas hot tub is built to not only meet but exceed any stringent energy efficiency regulations. We use Icynene foam technology that has dramatically raised the standard over urethane foam insulation systems used by

almost all other spa manufacturers. Icynene is polyisocyanurate expanding foam insulation that is environmentally safe. It allows foam to be sprayed without ozone destroying gases and without gas emission hazards.



The Icynene Insulation System expands to 100 times its initial volume in seconds to insulate and air-seal the spa. The resulting blanket of soft foam insulation forms a continuous thermal barrier that eliminates cold spots and significantly reduces energy costs. A consistent, comfortable temperature is maintained inside the spa, while cold air is kept outside, and condensation, mold and mildew prevented. Unlike urethane foam-based systems, which lose half their R value in as little as two years, Icynene maintains its insulation value for the life of your Master Spas hot tub.

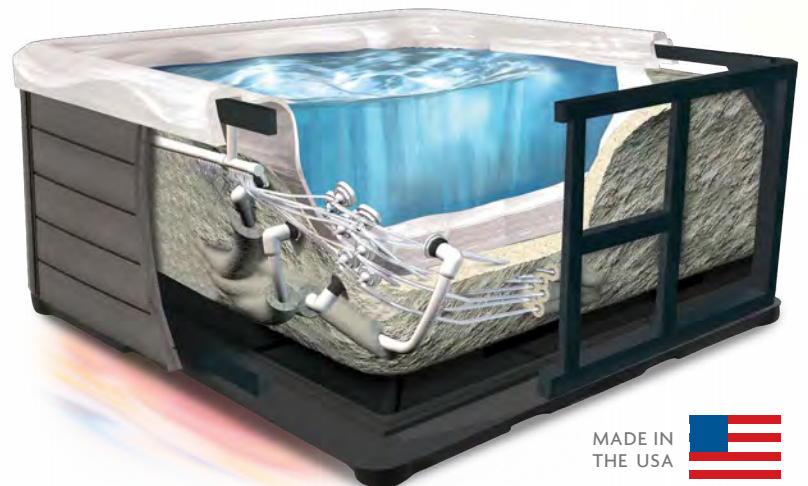
How we create a Legend

MASTER-CRAFTED, LEGENDARY REPUTATION



At Master Spas, we have worked for over 35 years to perfect your spa experience. We're proud to say that all our spas are made in the USA, and each design is master-crafted to achieve enhanced, innovative therapy and high-tech advancements in insulation, filtration and heating systems. Here are a few of the proprietary features that distinguish Master Spas as a leader in spa design, construction and performance:

- 2x4 ENGINEERED FRAME is heavy-duty and coated to reduce moisture absorption.
 - FIBERGLASS REINFORCED BILLETS give the frame's top flange greater strength.
 - VAC FORMED ABS PAN BOTTOM finishes the frame with a vac formed, high density ABS base that helps keep the heat in and unwanted pests out.
 - MANIFOLD PLUMBING SYSTEM ensures that pressure is distributed equally between the spa's jets.
 - NOISE REDUCTION SYSTEM is a result of advanced engineering innovation that reduces pump and motor vibration significantly as compared to the industry standard mounting system.
 - ENVIRONMENTALLY-FRIENDLY ICYNENE FOAM INSULATION makes Master Spas hot tubs among the most energy-efficient in the industry. Every Master Spas hot tub is built to not only meet but exceed any stringent energy efficiency regulations.
- ECOPUR® CHARGE MASTER CORE TECHNOLOGY is a patent-pending filtration system that takes the work out of maintaining your hot tub. Using the same multi-stage filtration techniques as Mother Nature, EcoPur Charge relies on a unique blend of copper and zinc that naturally creates an electro-chemical reaction to eliminate many microorganisms and remove heavy metals. This dramatically reduces the amount of sanitizer needed. Best of all, it is designed so your hot tub can be ready to use at any time, without the hassles of maintenance so you can concentrate on having fun.
 - DURAMASTER PREMIUM™ SKIRTING is made of high-impact, weatherable polymer. It features authentic wood grain patterns randomly etched into the polymer for a rich, three-dimensional look. The skirting has virtually no fading and is so durable, it comes with a lifetime warranty.



MADE IN
THE USA





Mast3rPur™



Clean, pure water — naturally

MAST3RPUR™ WATER MANAGEMENT SYSTEM*



The Mast3rPur Water Management System is the synergistic blend of three proven natural sanitizers that provide water quality and spa care not found in any other spa, including salt systems. Plus, the Mast3rPur System dramatically reduces harsh chemical consumption, like chlorine, while removing many heavy metals and chloramines for water that looks crystal clear, smells fresh and has a silky feel.

THE POWER OF THREE



When absorbed in water, **ozone** kills pathogens and microorganisms, destroys organics, and oxidizes non-organic contaminants.



When germicidal **UV-C light** is exposed to water it inactivates microorganisms and breaks down chloramines.



The unique combination of **copper and zinc** in the patent-pending EcoPur Charge filters creates an electro-chemical reaction to eliminate many microorganisms and remove heavy metals such as lead and mercury.

Each of the three elements are proven effective water management tools but when they are combined, their synergy makes them dramatically more effective through a chemical reaction known as Advanced Oxidation Process (AOP). AOP is superior to other systems because it produces powerful hydroxyl radicals that maximize disinfection and reduce chloramines fast and effectively. Clean, clear, fresh smelling and silkier water is available now with less work and less chemicals.**

QUIETFLO WATER CARE SYSTEM™*

What if you could fill your hot tub with fresh water every time you use it? With the QuietFlo Water Management System, you can. This amazing system moves water through your EcoPur Charge filtration system at 30 gallons per minute, 24/7. This means that a typical 7-foot hot tub will have complete filtration every 10-12 minutes.

* Optional

** The Mast3rPur option is only available on hot tubs equipped with the QuietFlo Water Care System.



LSX 900*

To create this stunning spa, we started with all the amazing features and comfort of the LSX 800, then increased seating so you can share the best life has to offer with all your favorite friends and family. A true luxury, the LSX 900 is the very best of Master Spas all wrapped up in one beautiful hot tub.

Dimensions:	108"x 94"x 38" (275 cm x 239 cm x 97 cm)
Weight (dry/full):	1,485 lbs (674 kg) / 7,055 lbs (3,200 kg)
Gallons:	490 (1,855 L)
Pumps:	3
Power requirement:	240 V / 50 Amp
Filtration:	EcoPur® Charge
Number of jets:	72
Seating capacity:	7-8
Secondary remote:	1
Master Blasters:	2 (14 jet nozzles each)
Water features:	AquaTerrace™ and AquaFontaine™
LED lighting:	Orion Light System™
Exclusive features:	Master Force™ Bio-magnetic Therapy System Noise Reduction System Vac Formed ABS Pan Bottom
Premium options:	QuietFlo Water Care System™ Mast3rPur™ Water Management System Fusion Air Sound System Wi-Fi Module Afterglow Jet Package Dream Lighting
Listing number:	1310



LSX 800

Live life better with the LSX 800, a premium hot tub inspired by the best. The spacious model offers premium features, beautiful styling, and outstanding performance. Up to six adults can enjoy the ultimate in hydrotherapy thanks to the 70 Orbit jets, lounge seating, and Master Blaster Foot Therapy.

Dimensions:	94"x 94"x 38" (239 cm x 239 cm x 97 cm)
Weight (dry/full):	1,330 lbs (603 kg) / 5,860 lbs (2,658 kg)
Gallons:	410 (1,552 L)
Pumps:	3
Power requirement:	240 V / 50 Amp
Filtration:	EcoPur® Charge
Number of jets:	70
Seating capacity:	5-6
Secondary remote:	1
Master Blasters:	2 (14 jet nozzles each)
Water features:	AquaTerrace™ and AquaFontaine™
LED lighting:	Orion Light System™
Exclusive features:	Master Force™ Bio-magnetic Therapy System Noise Reduction System Vac Formed ABS Pan Bottom
Premium options:	QuietFlo Water Care System™ Mast3rPur™ Water Management System Fusion Air Sound System Wi-Fi Module Afterglow Jet Package Dream Lighting
Listing number:	1290

*Shell colors available for LSX 900: Sterling Silver, Midnight Canyon and Tuscan Sun only



LSX 700

It's easy to sit back and relax in the LSX 700. One of our perennial best-sellers, it features a deep StressRelief Neck and Shoulder Seat™ and a contoured lounge seat. With 62 soothing and powerful jets, every seat in this beautiful hot tub is a winner.

Dimensions:	84"x 84"x 38" (214 cm x 214 cm x 97 cm)
Weight (dry/full):	1,095 lbs (497 kg) / 4,565 lbs (2,071 kg)
Gallons:	305 (1,155 L)
Pumps:	3
Power requirement:	240 V / 50 Amp
Filtration:	EcoPur® Charge
Number of jets:	62
Seating capacity:	4-5
Secondary remote:	1
Master Blasters:	2 (14 jet nozzles each)
Water features:	AquaTerrace™ and AquaFontaine™
LED lighting:	Orion Light System™
Exclusive features:	Master Force™ Bio-magnetic Therapy System Noise Reduction System Vac Formed ABS Pan Bottom
Premium options:	QuietFlo Water Care System™ Mast3rPur™ Water Management System Fusion Air Sound System Wi-Fi Module Afterglow Jet Package Dream Lighting
Listing number:	1280

PREMIUM OPTIONS

QUIETFLO WATER CARE SYSTEM™ Our advanced energy-efficient circulation pump moves water through your EcoPur® Charge filtration system at 30 gallons per minute, 24/7.

MAST3RPUR™ WATER MANAGEMENT SYSTEM Provides radically clean spa water in an environmentally friendly way using a synergistic blend of three proven natural sanitizers, including our patent-pending EcoPur® Charge water filtration system. The Mast3rPur™ option is only available on hot tubs equipped with the QuietFlo Water Care System.

FUSION AIR SOUND SYSTEM Four interior water-resistant speakers and a subwoofer maximize the sound quality of your music. The Fusion Air Sound System includes a water-resistant remote and connects quickly and easily through the Bluetooth of your phone or other device, allowing you to stream your favorite station or playlist.

WI-FI MODULE Enables you to remotely control the operations of your spa through a Wi-Fi spa control app.

AFTERGLOW JET PACKAGE Illuminates the larger crystal-like jets in your spa.

DREAM LIGHTING Beautiful soft streams of light to accent the exterior corners of your hot tub at night. (Not available with DreamStone™ skirting.)

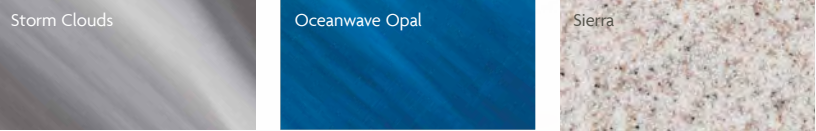
SHELL OPTIONS

We offer a selection of versatile colors to perfectly complement your home. Choose the one that best fits you!

STANDARD SHELL COLORS

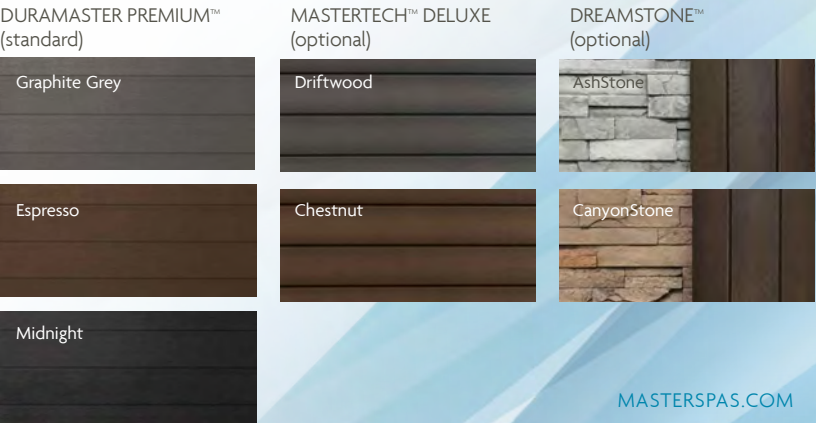


OPTIONAL SHELL COLORS*



SKIRT OPTIONS

Match the color of your spa with the skirting of your choice for a distinctive combination that's truly your own. DuraMaster Premium™ skirting is made of high-impact, weatherable polymer. This skirting has virtually no fading and is so durable, that it comes with a **lifetime warranty**. MasterTech™ Deluxe skirting features authentic wood grain patterns for a rich, three-dimensional look. For ultimate luxury, choose the convincing DreamStone™ synthetic skirting, with the look of contemporary stacked stone and chestnut stained barrel wood corners.





MASTER SPAS CARES FOR KIDS

Master Spas and our dealers were part of building a new elementary school in 2013, and a new high school in 2018 for the NAZ Children's Centre in Rose Hall, Jamaica. This specialized Christian school does an outstanding job educating children as well as working with children with developmental problems. With every Master Spas swim spa sold, a donation will be made to the NAZ Children's Centre Scholarship Fund.



In our hometown, we are honored to partner with the Crossing School of Business and Entrepreneurship, a faith-based high school that turns at-risk youth into tomorrow's leaders. Master Spas provides operational space for vocational training and a micro business.



MASTER SPAS CARES FOR CURES

Master Spas is pleased and proud to assist two foundations dedicated to finding and funding the cures for life-hindering diseases.

Along with the Lupus Foundation of America, we have initiated a campaign to help raise awareness and find a cure for this debilitating disease that affects more than 1.5 million Americans. Part of the profit from each "Lights for Lupus" spa will go to the Lupus Foundation. Together, we can fund and find the cure.



Master Spas has joined forces with the Vera Bradley Foundation for Breast Cancer to eradicate breast cancer, a life-threatening disease, by providing financial support for research and research-related projects.



For more information, visit MasterSpas.com/cares



MICHAEL PHELPS LEGEND SERIES HOT TUBS ARE MANUFACTURED BY MASTER SPAS, AN AWARD WINNING COMPANY YOU CAN TRUST.



Master Spas® reserves the right to change product specifications or features without notice. Master Spas is a manufacturer of hot tubs and related products, and we stand behind every product we produce pursuant to those representations which are stated in our written limited warranty. Your dealer is an independent businessperson or company and not an employee or agent of Master Spas, LLC. We cannot and do not accept any responsibility or liability for any other representations, statements or contracts made by any dealer beyond the provisions of our written limited warranty. Master Spas, Legend, Master Blaster, and EcoPur are registered trademarks of Master Spas, LLC. Apple is a trademark of Apple Inc., registered in the U.S. and other countries. Android is a trademark of Google Inc. EcoPur® Patent US 6,962,660 B2.